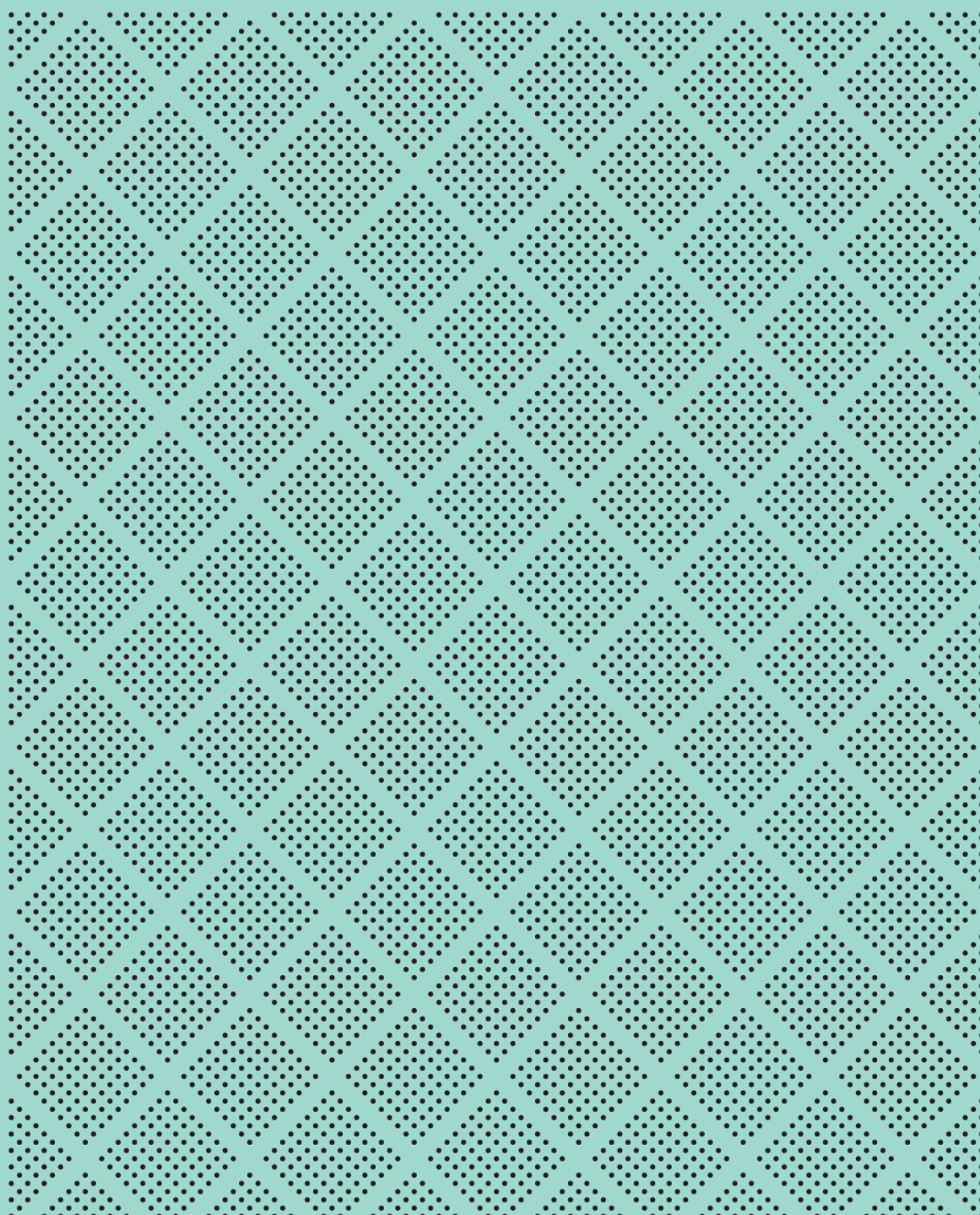




Responsible Investment Policy

June 2026



Responsible Investment at Mint

A responsible investment approach recognises there is more that drives investment returns than just what is found in financial reports. Responsible investing has been a core and fully integrated component of Mint's investment management process for a long time. Understanding environmental, social and governance (ESG) risks and opportunities alongside other financial metrics helps us to make better investment decisions.

Overall approach & definitions

Mint has a fiduciary duty to act in the best interests of our clients. The analysis of ESG issues as an integral part of our investment process enables Mint to make a full assessment of the risks and opportunities associated with investments, and thus uphold our fiduciary duty. We also believe taking ESG factors into consideration is the right thing to do: we are avoiding unnecessary harm to people and the environment, and society will benefit from companies adopting sustainable principles and processes.¹

Mint is a signatory to the United Nations-supported Principles for Responsible Investment (PRI), and we agree with their definition of responsible investment: the consideration of ESG issues when making investment decisions and influencing companies.

Mint implements responsible investment in three ways: through ESG integration, stewardship activities, and exclusions.

The PRI defines ESG integration as “the process of including ESG factors in investment analysis and decisions to better manage risks and improve returns”. The PRI defines exclusions as “applying filters to a universe of securities, issuers, investments, sectors or other financial instruments to rule them out, based on poor performance on ESG factors relative to industry peers or specific environmental, social or governance criteria.” Mint agrees with and adopts both these definitions.

Stewardship is defined in our Stewardship Policy.

ESG integration

We believe considering ESG factors enhances long-term risk-adjusted returns and drives long-term value for our investors. In practice, this means we look to understand whether material ESG risks are being adequately managed by a company, and whether the market has understood and priced the company’s exposure to those risks accordingly.

Our approach to ESG integration differs across asset classes.

Australasian Equities

Mint has created a proprietary ESG questionnaire which Analysts and Portfolio Managers must complete for any Australasian Equity we are considering investing in. The questionnaire provides a prompt for our analysts and portfolio managers to consider the range of ESG risks and opportunities that could affect a company. Companies are scored lower if their exposure to ESG risk is higher. Companies are also scored lower if their management of those risks is poor. These scores feed into a qualitative score. Mint’s New Zealand SRI Equity Fund applies a double weighting to these ESG scores within the qualitative score.

We then combine the qualitative score with a quantitative score to produce a conviction score. This conviction score is used to rank companies in the investment universe for potential inclusion in the model portfolio. Companies with strong ESG scores are promoted within the conviction list (and

¹ Sustainable principles and processes mean a company focuses on meeting the needs of the present, without compromising the ability of future generations to meet their needs.

vice-versa), from which the model portfolio is constructed. This means if there were two companies with all other factors equal, the company which is the better performer from an ESG risk perspective (i.e., has a lower risk exposure and/or manages these risks well) will have a larger weighting in the model portfolio.

This model portfolio is then used as an input into the final portfolio, alongside investment team reviews and current market considerations. The final decision on portfolio construction is the responsibility of the respective Portfolio Manager.

We have created this proprietary scoring system to reflect the fact Mint is located in New Zealand and we are well resourced in the teams that analyse Australasian Equities.

Below are some examples of the factors we consider in our proprietary ESG questionnaire.

1. Environmental factors.

Environmental factors that we consider include the environmental intensity of business operations, the track record and tangible steps taken in emissions management, the presence of clear policies and strategies, and the presence of products or services that assist others in managing environmental needs.

2. Social factors.

The social aspects of company performance we consider include diversity statistics, workplace safety practices and track records, privacy and data practices, and supply chain monitoring and standards.

3. Governance factors.

The governance factors of a company's performance we consider include board independence and tenure, whether there is an appropriate mix of skills and diversity, incentive structures, and board responsiveness to investor engagement.

These factors are used as guidelines in our proxy voting decisions too (please refer to our Stewardship Policy for more detail on our proxy voting approach).

Global Equities

For global equities, we use the ESG risk rating scores of third-party research provider Sustainalytics. We have chosen this approach in recognition of the fact that Sustainalytics, as a research house, has greater resource and coverage to better understand the ESG risks facing global names.

Global equities are ranked in a quantitative model, with inputs including value, size and momentum. The conviction score is then adjusted up and down based on the Sustainalytics scores. The model portfolio produced as a result of the conviction score is then used as an input into the final portfolio, alongside investment team reviews and current market considerations. The final decision on portfolio construction is the responsibility of the respective Portfolio Manager.

Fixed Income

We do not apply ESG integration to our fixed income investments. However, we do apply exclusions – please refer to the exclusions section below.

Cash & Cash Equivalents

Cash equivalents are short-term investment securities that can quickly be converted into cash, and include US government Treasury bills and bank certificates of deposit. The investment of cash and cash equivalents Mint makes is with banks with a credit rating of A or higher (based on Standard &

Poors' credit rating scale). We will not hold or transact our cash & cash equivalents through a bank or financial institution with a credit rating lower than this. The credit rating agencies all take ESG factors into account in their credit ratings.

Exclusions

Exclusions – direct investments

Exclusions, which can also be referred to as negative screening, means applying filters to a universe of investments to rule them out, based on specific environmental, social or governance criteria. Mint exclusions apply to a company's revenue streams and disclosed revenues of investments into an excluded activity. Mint exclusions also rely on third party provider data. This data is subject to the timeliness of disclosures by companies, and the timeliness of detection by that third party provider.

Exclusions – indirect investments

Our exclusions list does not apply to any indirect investments we hold. Indirect investments include pooled investment vehicles such as third-party managed funds and exchange-traded funds (ETFs). Tailoring these indirect investments to comply with our direct exclusions would be so complex and expensive, that doing so would have a worse impact on clients' interests than a small amount of indirect exposure to excluded names. On balance, the advantages for risk management we can gain through use of these indirect investments outweighs the risk we take of indirect exposure to excluded names.

Risk-Return trade offs

ESG risks are ever-present but need to be assessed over a long-term time horizon. Similarly, ESG opportunities are long-term value drivers. Therefore, incorporating an ESG framework into our investment process aligns with our fiduciary duty to act in the best interests of our clients, as we aim to grow their wealth over the long-term.

There can, at times, be a conflict between seeking to achieve both financial outcomes and non-financial objectives in our funds. For example, many decarbonisation technologies are not yet at scale, so it could impact the short-term financial returns of one of our investee companies if they invest in a costly new system – but the investment would be positive from an ESG risk perspective. In this situation, we prioritise the long-term view and would support the expenditure by the company (assuming it was part of a considered, strategic capex program).

Another example is that a profitable investment in one of our portfolios starts producing an item that is on our exclusion list – such as tobacco. Production of tobacco is a profitable revenue stream, but we know tobacco causes unnecessary harm to people. In this situation, we would divest (as soon as practicable, with consideration of our clients' interests in doing so).

Political Engagement

Mint's political engagement is limited to engaging with policy makers to contribute to specific policy developments. This might include submitting a response to consultations published by a government department, or being involved in collaborative working groups with government or regulator bodies.

Mint views its engagement with policy makers is key in upholding our commitment to be a responsible investor. All submissions and publications we make in this regard follow our internal sign-off process. Our sign-off process ensures the submissions and publications we do make are aligned with our commitments to the PRI (and more generally to responsible investment).

Memberships and Signatory Commitments

Mint is a member of or a signatory to a number of organisations, listed below. We take time when considering whether or not to join these groups, to ensure they are of value to us and our clients.

1. Principles for Responsible Investment (PRI)

Established by the United Nations, the PRI aims to provide a consistent framework for reviewing business practices across industries & companies, and incorporating ESG factors into investment and ownership decisions. To evidence our commitment to responsible investment, and to hold us accountable to that commitment, Mint is a signatory. As a signatory, we make an explicit commitment to the PRI's six principles. We report on our progress against the principles annually; our latest transparency report is available on our website.

Responsible investing is a significant growth area, but it is crucial that organisations participate authentically to influence real change. Reporting to a global, best-practice framework allows Mint to evidence that we're doing what we say we're doing and compare our performance to peers. We can also access collaborative engagements and collaborative proxy voting activities, as well as numerous resources, through being a signatory.

2. Responsible Investment Association Australasia (RIAA)

Mint is a member of RIAA. As members, we support RIAA on their mission to promote, advocate for, and support approaches to responsible investment that align capital with achieving a healthy and sustainable society, environment, and economy. As well as providing access to numerous resources and two annual conferences at the forefront of the Responsible Investing space, RIAA has a few working groups that members can join. These working groups provide us access to specialists across the globe, resources built specifically for the investment community, and collaborative engagements, amongst other advantages.

3. Aotearoa New Zealand Stewardship Code

Mint is a signatory to the Aotearoa NZ Stewardship Code. The code, launched in December

2022, gives signatories a framework with which to engage with investee companies on ESG issues. The first report from all signatories is due in December 2024. The code also provides a forum for information sharing, as local managers look to increase their stewardship activities. Importantly, it also provides access to a group of investors willing to undertake collaborative engagements, which has been a gap in the New Zealand market until now.

4. Task Force on Climate-Related Financial Disclosures (TCFD)

Mint is a public supporter of the TCFD, which was established by the Financial Stability Board

and G20 leaders in 2015 and published climate-related financial disclosure recommendations

in 2017. These recommendations are designed to help companies provide better information on the risks and opportunities they face in relation to climate change. The New Zealand Climate Standards, or mandatory climate-related reporting, closely follow the TCFD framework, and Mint will voluntarily produce our first report by July 2024. Being a public supporter of the TCFD is an important step in addressing the systemic issue of climate change – see our Stewardship Policy for more information.

5. New Zealand Corporate Governance Forum

The NZ Corporate Governance Forum members are institutional investors with significant investment in NZ listed companies. The Forum is committed to promoting good corporate governance in NZ companies for the long-term health of the capital market. Mint is also a member of the steering group of the Forum.

6. Boutique Investment Group (BIG)

BIG is a collection of New Zealand fund managers who share knowledge and critical thinking on regulatory, compliance and governance issues affecting the funds management sector. The group engages with regulatory bodies to advocate for an efficient, effective and vibrant fund management sector that will benefit all New Zealand.

Oversight, implementation and monitoring

The Responsible Investment and Stewardship Policies are authorised by Mint’s Head of Equity. The policies are monitored as part of the overall suite of company policies. Reviews are reported to the Head of Compliance and the Group CEO.

Mint’s Head of Equity has ultimate responsibility for implementing Mint’s approach to responsible investment and the policies, supported by the CEO. All investment team members have a responsibility to implement this approach, as part of their daily duties. Each Portfolio Manager is responsible for the overall ESG settings in their portfolios and ensuring they align with these policies. The operations team are responsible for maintaining the exclusions list, and monitoring of the list.

Review

This Policy is reviewed annually or more frequently if required.

Appendix A - Excluded Sectors and Activities

| Sector | Rationale | Operational revenue threshold | Mint Funds exclusions apply to: |
|--|---|-------------------------------|---|
| Tobacco production, including nicotine alternatives and electronic nicotine delivery systems | Social impact; WHO Framework Convention on Tobacco Control 2005; The Smoke-free Environments Act 1990, and subsequent amendments. | 0% | All Mint funds. |
| Controversial weapons production, including: <ul style="list-style-type: none"> • Nuclear weapons • Cluster munitions • Anti-personnel mines • Chemical and biological weapons • Automatic & semi-automatic firearms, magazines & parts | Social Impact; Cluster Munitions Convention signed by the New Zealand Government in 2008; Treaty on Non-proliferation of Nuclear Weapons; New Zealand Nuclear Free Zone, Disarmament, and Arms Control Act 1987 | 0% | All Mint funds. |
| Fossil Fuel Extraction, including: <ul style="list-style-type: none"> • Integrated Oil & Gas • Oil & Gas exploration and production • Coal Mining | Environment Impact; The Paris Agreement within the United Nations Framework Convention on Climate Change (signed and ratified by NZ in 2016). The Climate Change Response (Zero Carbon) Amendment Act 2019 | 0% | All Mint funds. |
| Pornography production | Social Impact; The Child Pornography Prevention Act 1996 | 0% | All Mint funds. |
| Recreational cannabis, including: <ul style="list-style-type: none"> • Cultivation or manufacture of cannabis plants and products for recreational use • Supply of cannabis plants for products for recreational use | Social Impact; Misuse of Drugs Act 1975 <i>[This exclusion makes distinction between recreational cannabis which is illegal in NZ, and medicinal cannabis which was legalised through amending the above Act via the Misuse of Drugs (Medicinal Cannabis) Regulations 2019]</i> | 0% | All Mint funds. |
| Whale Meat Processing | Environment Impact; NZ membership of the International Whaling Commission which has had a moratorium on commercial whaling since 1982. | 0% | All Mint funds. |
| Casinos / Gambling | Social impact | 0% | Mint NZ SRI Equity Fund and Mint Australasian Equity Fund only. |